



SOUTH BRUCE GREY HEALTH CENTRE

CHESLEY | DURHAM | KINCARDINE | WALKERTON

GENERAL SURGEON

FULL TIME – WALKERTON, ON

South Bruce Grey Health Centre is a dynamic, multi-site health care organization with approximately 400 employees serving four rural communities in Chesley, Durham, Kincardine and Walkerton.

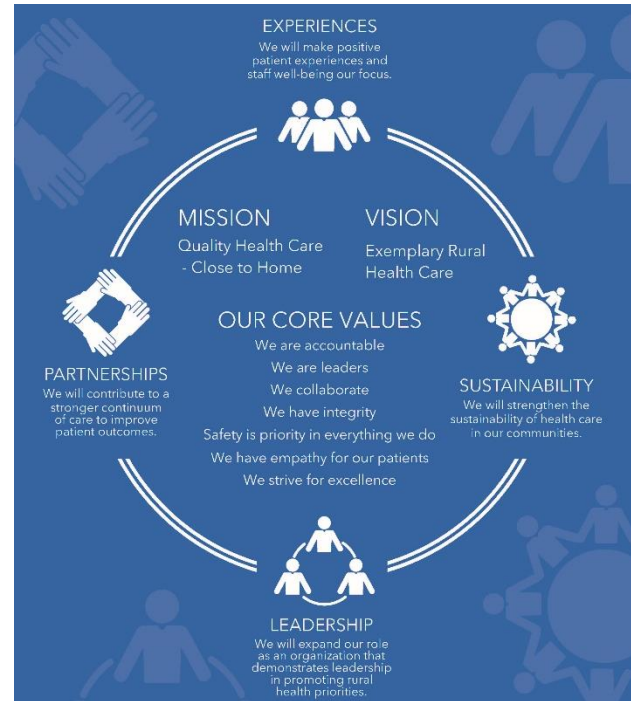
Each of our hospital sites offer acute care services, a 24-7 emergency department, and a full complement of diagnostic and laboratory services.

Our Walkerton site offers CT services, and is home to the Dr. R.J. Creighton Family Birthing Centre, a level 1 facility with over 400 births per year.

Our surgical program runs at our **Kincardine** and **Walkerton** sites. Operating Room services are based in Walkerton, with after-hours emergency on-call service available, and endoscopic day surgery services are based in Kincardine. OR blocks will be assigned at both sites.

On-call coverage, 1:3, for our Surgical Program is a collaboration among our community partners.

Office rental options are available in the Brockton & Area Family Health Team, adjoined to the hospital, for interested candidates.



SOUTH BRUCE GREY HEALTH CENTRE HAS AN IMMEDIATE OPENING FOR A FULL-TIME GENERAL SURGEON TO JOIN OUR TEAM.

QUALIFICATIONS

- Applicable FRCPC designation
- Independent license to practice in Ontario
- C-section training (mentoring available)

COMPENSATION

- Fee for service plus HOCC stipend

QUALITY HEALTH CARE – CLOSE TO HOME



SOUTH BRUCE GREY HEALTH CENTRE

CHESLEY | DURHAM | KINCARDINE | WALKERTON

GENERAL SURGEON

FULL TIME – WALKERTON, ON

COMMUNITY

From the heart of Saugeen country in Durham to the sandy beaches of Kincardine, there are a variety of recreational pursuits to enjoy. A balanced professional and personal lifestyle is easily attainable in any of our communities. We boast a variety of art galleries, museums, theatres, music and light festivals.

Bruce and Grey Counties offer highly acclaimed golf courses and ski resorts, and there are nine designated bike routes in the Huron Shoreline area, ranging from 8 to 100 kms. The many lakes and river systems in our area lend themselves to canoeing and kayaking experiences for all experience levels.

For more information on what Bruce and Grey Counties have to offer, visit explorethebruce.com and visitgrey.ca.

A YEAR IN REVIEW APRIL 1 2017 - MARCH 31, 2018



**FOR MORE
INFORMATION ON THIS
EXCITING
OPPORTUNITY, PLEASE
CONTACT:**

Dr. Paul McArthur
Brocton & Area Doctor
Recruitment Committee
spmcarthur@gmail.com

QUALITY HEALTH CARE – CLOSE TO HOME